

Wallingford

Adult & Continuing Education



Fall 2018

www.wallingfordadulthood.org
www.facebook.com/wallingfordadulthoodeducation



DEAR FRIENDS ...



Welcome to Wallingford Adult Education's fall brochure of classes and activities. If you are planning to complete a high school education, or strengthen your English language skills these are free to all our residents. In addition, we offer a wide variety of enrichment and general interest classes for community members. Browse through the brochure and register to experience the power of lifelong learning.

For more information please visit www.wallingfordadulthood.org

Sashi Govin, Director
Wallingford Adult Education

CONTACT INFORMATION

Adult Education Office at
Mark T. Sheehan High School

Telephone (203) 294-5932

Fax (203) 294-5981

Learning Center

Telephone (203) 294-3900

Fax (203) 294-3929

Wallingford Adult Education Website
www.wallingfordadulthood.org

Wallingford Adult Education Facebook
www.facebook.com/wallingfordadulthoodeducation

Wallingford Public Schools Website
www.wallingford.k12.ct.us

REGISTRATION

See how to register for mandated programs on page 2.

See how to register for Enrichment and General Interest classes on page 18.

NEW COURSES

3D Printing 101 page 6

Dave Ramsey's – Financial Peace University page 11

Fortune Telling page 14

Trips page 16

TABLE OF CONTENTS

Mandated Programs

Adult Basic Education (ABE).....2
 English as a Second Language (ESL) ..2
 U.S. Citizenship Preparation.....2

High School Diploma Programs

Wallingford Adult High School Credit
 Diploma3
 National External Diploma Program
 (NEDP).....3
 Preparation for GED® Test3

Student Supports

Counseling4
 (Accessibility and Accommodation)

Special Projects

ESL American Living.....4
 Family Literacy.....4
 Workforce Readiness.....4

Enrichment and

General Interest Information

Boating5
 Computer Technology5
 Creative Arts.....7
 Fitness & Yoga7
 In The Kitchen.....8
 Language.....8
 Medical Career Programs.....9
 Money Matters.....10
 Personal Enrichment.....12
 Specialty Classes13
 Teen Driver Education.....15
 Travel16
 Ways to Register18
 General Information19
 Registration Form.....20

CALENDAR

Immediately

Registrations begin for General Interest Courses.
 Wallingford High School registration is at the Learning Center, by appointment only. Please call (203) 294-3900.

Monday, September 3

CLOSED – Labor Day

Tuesday, September 4

LEARNING CENTER OPENS
 CLASSES BEGIN

Monday, October 8

CLOSED – Columbus Day

Tuesday, October 23

Noon – Wallingford Adult Education Advisory Council meeting at the Learning Center

Tuesday, November 6

Election Day

Monday, November 12

CLOSED – Veterans’ Day

Wednesday, November 21

No Adult Education Classes in Learning Center
 No Evening General Interest Classes

Thursday & Friday, November 22 & 23

CLOSED – Thanksgiving Break

Thursday, December 13

Evening General Interest Classes End

Thursday, December 20

Learning Center Classes End

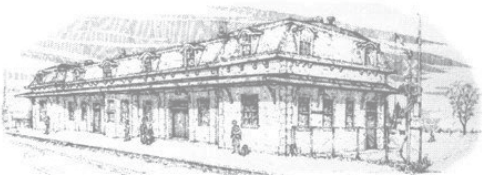
Monday, December 24 –

Tuesday, January 1, 2019

CLOSED – HOLIDAY RECESS

Wednesday, January 2

LEARNING CENTER OPENS



Adult Education Programs at No Cost

The Wallingford Board of Education provides the following programs at no cost to Wallingford residents:

- Adult Basic Education
- English as a Second Language
- Citizenship
- High School Diploma
(Credit Diploma, National External Diploma Program and GED® Preparation)

These programs are in compliance with Connecticut General Statutes Section 10-73a(c) and there is no fee for textbooks and materials. Information on all programs is provided on pages 2-4 of this catalog. For more information, call 203-294-3900.

HOW TO REGISTER?

Registration is ongoing throughout the year. Please contact the Wallingford Adult Ed office at 203-294-3900 or stop in at the Adult Learning Center (Historic Train Station), 37 Hall Avenue, during the class times listed below. You must be 17 years of age and no longer enrolled in school. **GENERAL ACCESSIBILITY AND ACCOMMODATION:** If you are a person with a disability who requires an accommodation in order to participate in any program or activity, please contact our School Counselor, Matthew Madruga at 203-294-3904 or mmadruga@wallingfordschools.org

ADULT BASIC EDUCATION

ABE classes improve fundamental academic skills and/or can help prepare an adult to earn a high school diploma. The classes help sharpen English expression, reading, spelling, writing, and math skills. Students work with computers, audio-visual material and printed text. You will learn in one-to-one and small group environments.

DAYTIME CLASSES: Tuesday & Thursday: 9:15 a.m. – 11:15 a.m.

EVENING CLASSES: Tuesday & Thursday: 6:00 p.m. – 8:00 p.m.

START DATE: Tuesday, September 4

CITIZENSHIP EXAM PREPARATION

Prepare for the US Citizenship exam. You will learn American history as well as the functions of our local, state, and federal government. You will receive help with the naturalization application and discuss typical exam questions.

EVENING CLASSES: Monday & Wednesday: 6:00 p.m. – 8:00 p.m.

START DATE: Wednesday, September 12

ENGLISH AS A SECOND LANGUAGE (ESL)

If you are new to our country, or if you want to improve your English, three levels of classes are offered that stress the life skills necessary to live and work in the United States. The sessions are for adults who want to learn or improve their reading, writing and speaking skills.

DAYTIME CLASSES: Monday & Wednesday: 9:15 a.m. – 11:15 a.m.

EVENING CLASSES: Monday & Wednesday: 6:00 p.m. – 8:30 p.m.

START DATE: Tuesday, September 11

ESL / CIUDADANIA

Ofrecemos estas clases en ingles para estudiantes que desean aprender el idioma ingles o estudiantes que necesitan prepararse para el examen de la ciudadania.

ESL (READING, WRITING AND PRONUNCIATION) FOR EVERYDAY LIVING

Do you want to improve your pronunciation and speak English more clearly? Do you want to practice reading? Do you want to learn how to write letters, emails, notes to your child's school and fill out forms? Intermediate and Advanced ESL learners are encouraged to join this lively course.

DAYTIME CLASSES: Friday: 9:30 – 11:30 a.m.

START DATE: Friday, September 14



HIGH SCHOOL DIPLOMA



3 WAYS TO EARN YOUR DIPLOMA

1. WALLINGFORD ADULT HIGH SCHOOL CREDIT DIPLOMA

This program offers adults the opportunity to earn a high school diploma. Participants may earn credits through a combination of afternoon courses, documented work or training experience. Credits may be transferred from public or private high schools and state technical high schools. To receive this “traditional” diploma, you must earn 20 credits, including those you may have earned at your former high school. The Wallingford Adult High School Credit Diploma Program offers small classes and online courses. When all credits are completed, of which four must be in English, three in mathematics, two in science, three in social studies (including U.S. history and civics), and one in Vocational Education Arts, a diploma will be awarded. (CDP is open to all people who are at least 17 years or older, do not hold a high school diploma, and are no longer officially enrolled in high school). For more information about this diploma option, please call the Adult Education School Counselor at the Learning Center, Monday through Friday between 3:30 p.m. – 6:30 p.m.

2. NATIONAL EXTERNAL DIPLOMA PROGRAM (NEDP)

Earn a Wallingford Adult High School diploma independently, through the successful completion of a series of assignments in a computer based format. Through this option students earn their high school diploma independently through the successful demonstration of life skill competencies as well as an individualized competency. You will meet with an assessor periodically to help you reach your goals. NEDP is recommended for those 21 years of age who have acquired some of the life skill experiences needed for successful completion of the program.

3. PREPARATION FOR GED® TEST

This program prepares adult learners to pass the four-part, computer-based GED® exam to earn a State of Connecticut high school diploma. Students receive necessary instruction in each of four subject areas - science, social studies, math and language arts – plus the basic computer skills needed to take the exam. Instructors will also review the official website, ged.com, where students can access related exam information and exam registration procedures. To be able to register for the GED® exam, students must be at least 17 years old and officially withdrawn from school for six months. Students can begin the GED® registration process online at ged.com and complete the process in person at Wallingford Adult Education. Individuals with a documented disability who require accommodations to take the GED® test will use www.ged.com to apply for test accommodations. You may also contact Sabrina Mancini at the State Department of Education at 860-807-2111.

DAYTIME CLASSES: Tuesday & Thursday, 9:15 a.m. to 11:15 a.m.

EVENING CLASSES: Tuesday & Thursday, 6:00 to 8:00 p.m.

For more information about these diploma options please contact The Learning Center at (203) 294-3900.

SPECIAL PROJECTS

“These programs are supported by the Workforce Innovation and Opportunity Act, Title II - Adult Education and Family Literacy.”

ESL American Living

For students who regularly attend Intermediate or Advanced ESL classes and persons who have graduated from ESL, an American Living class is offered that provides additional study of current events, finances (money), basic writing, US history, computers, and how US government works and career awareness.

DAYTIME CLASSES: Tuesday & Thursday, 9:15 a.m. – 11:15 a.m.

START DATE: Tuesday, September 11

Family Literacy

Parents of children enrolled in Pre-kindergarten and Kindergarten classes at Cook Hill, Highland, EC Stevens and Moses Y. Beach elementary schools may participate in language development and reading readiness activities at their child’s school. Parents work on their own adult education lessons and spend time with their children on their grade level language development activities. Transportation between the Adult Education Learning Center and the elementary schools is provided.

Please call Wallingford Adult Education for additional information at 203-294-3900.

Workforce Readiness

Wallingford Adult Education will provide deep exposure to workforce readiness activities including literacy instruction, digital literacy skill development, career exploration, and usage of resources available from the American Jobs Center and the post-secondary education institutions. These sessions are for diploma preparation students and students in the Advanced ESL level. Class days and times to be announced.

KEY COMPONENTS:

- Basic skills instruction in reading, writing and math,
- Develop “soft skills” such as understanding of ethics, team-work, and critical thinking skills.
- Individual career and education plan/profile.
- Potential employment opportunities and education training programs.
- Job shadowing opportunities and/or pre-apprenticeships.

National External Diploma Program (NEDP)

(Through WIOA funds, Wallingford Adult Education is able to offer the NEDP a Connecticut approved high school completion program, to qualified residents of Cheshire, Meriden and Wallingford, CT. Through this option, a student can earn their high school diploma independently through successful completion of life skill competencies. The student uses skills gained from life and work experience to demonstrate reading, writing and math ability.) If you are employed, enrolled in job training or have other commitments such as managing a household, NEDP offers flexibility to earn a diploma. NEDP also offers the opportunity to work independently and meet periodically with an assessor in a confidential setting. Some classes will be offered in Meriden by appointment only.

Student Supports

ADULT EDUCATION PROGRAMS AND SERVICES:

Assessment and Placement: Counselors will administer and interpret tests of your abilities and interests, then place you in the right courses.

Career Counseling: Explore your abilities, interests, values, and knowledge of various careers; learn resume writing and interviewing skills.

Educational Counseling: Learn about college programs, vocational and technical schools, apprenticeships and other learning/training options.

Counseling: FREE to all Wallingford Adult Education students, and to anyone considering becoming a student. Talk with a counselor about your educational goals and the life issues that affect them.

REGISTRATION

Registration can be made at any time during the semester. Do not wait until the last minute. Classes may be canceled if enough registrations are not received five days prior to the starting date. Register for any course(s) as soon as our brochure is available, regardless of the course start date.

All classes are held at Mark T. Sheehan High School or other specified locations.

Registration information can be found on page 18. Registration form can be found on page 20. Make checks payable to: Wallingford Adult Education.

PLEASE REGISTER EARLY!

BOATING

Safe Boating & Personal Watercraft Safety Certification

1-Day Combination complete updated safe boating certification course taught in one (8-hour) day. This class includes the newest requirement for towing skiers and tubes. Successful completion will allow the student to purchase a Connecticut Certificate of Personal Watercraft Operation with Waterski endorsement, which enables them to operate any recreational vessel up to 65 feet in length, with some age restrictions of younger operators.

PRIOR TO TAKING THIS CLASS each student should create an account online at <https://www.ct.wildlifelicenses.com/internetsales>. Create an account if you do not have one, and then print the page that includes your Conservation ID number and bring it to class. Once we have entered your score in the DEEP system you will use your account to purchase and print the certificate after the class. Student should bring a pen or pencil to class.

Professional Marine Education Instructor Learning Center (Railroad Station)
Saturday 8:30 a.m. - 4:30 p.m.
1 Day October 13
Each Session Resident.....\$65
Each Session Non-resident.....\$70

COMPUTER TECHNOLOGY

NEW! CNC Sign Making 101

CNC stands for computer numerical control. A versatile system that allows you to control the motion of tools and parts through computer programs that use numeric data. The most common CNC machines found in the machine/wood shop include machining centers (mills) and turning centers (lathes). The class will explain operations performed with the help of CNC. The content is for individuals who need to understand what CNC is and how it works. CNC machines are used to make a variety of product using a number of different processes. With proper guided training, you can use a CNC Machine to make accurate signs with decreased risk of error. After taking this class users should be able to describe common components of CNC machine tools and controls while making a basic wood sign.

A Czarnecki Sheehan
Tuesday 6:00 – 8:00 p.m.
9 weeks September 25
Resident \$179 Non-resident \$184



COMPUTER TECHNOLOGY

NEW! 3D Printing 101

3D printing is an additive manufacturing process whereby objects are built up from plastic filament, liquid resin, layers of powder, or even biocompatible and edible materials. Desktop 3D printing is today's printing press, putting rapid prototyping, customizable products, and individualized medical appliances in reach of the general public. Literacy in basic 3D modeling and manufacturing is an essential skill for future STEM success in this country. Learn how to be "makers" by using various type of 3D modeling software, printing physical objects that you have designed. Finish with techniques for showcasing your work.

A Czarnecki Sheehan
Wednesday 6:00 – 8:00 p.m.
7 weeks September 26
Resident \$86 Non-resident \$91

NEW! Introduction to the Apple iPhone

Designed for first-time Apple iPhone users as an introduction to their iPhone. This course will cover the various parts of the iPhone, what a user sees on the screen, how to use some of the settings and applications. This class is designed as a hands-on experience. No computer experience is required. Please bring your Apple iPhone with you. (Please note: This class covers Apple iPhones only, if your phone is manufactured by another company this class isn't the best fit for you).

P. Andersen Learning Center
Monday 3:00 – 5:00 p.m.
4 weeks October 15
Resident \$72 Non-resident \$77



Microsoft Excel for Beginners

Pre-requisite: type at a reasonable speed and have basic computer skills. Microsoft Excel is a spreadsheet software program for personal or business use. Learn how to navigate through a spreadsheet, save and print worksheets, cell basics, modifying columns, rows, cells, sort, filter, create formulas, create graphs, etc. Bring a USB flash drive to save your work. Handouts provided.

M. Hatton Sheehan
Wednesday 6:00 – 8:00 p.m.
6 weeks September 26
Resident \$95 Non-resident \$100

Microsoft Word Introduction

You will learn how to create, save, print and format basic documents. Also how to edit, format, and insert a table or picture into a document. Bring a Flash Drive to class.

J. Holcomb Sheehan
Tuesday 6:30 – 8:30 p.m.
3 weeks October 2
Resident \$65 Non-resident \$70

Microsoft Word Intermediate

Create, style and format multiple page documents. Create flyers and brochure style documents using bullets and numbering, headers, footers and more. Bring a Flash Drive to class.

J. Holcomb Sheehan
Tuesday 6:30 – 8:30 p.m.
3 weeks October 23
Resident \$65 Non-resident \$70

Windows Files and Folders

Use Windows Explorer to learn how to set up folders to move or copy documents, pictures and music files. See how to transfer files to and from a Flash Drive. Bring a Flash Drive to class.

J. Holcomb Sheehan
Tuesday 6:30 – 8:30 p.m.
2 weeks November 20
Resident \$55 Non-resident \$60

CREATIVE ARTS

Beginning Knit or Crochet

Join us to learn to Knit or Crochet. We will get started with the basics and continue with cast on, bind off, knit and Purl for knitting or chain, and single crochet and double crochet for crochet. \$20 supply fee for one skein of yarn and needles.

L. Scarpa.....Country Yarns
Thursday.....6:30 – 8:30 p.m.
3 weeks.....October 4
Resident \$70.....Non-resident \$75

NEW! The Joy of Painting

Anyone beginner or advanced will be able to paint in oil a 16 x 20 canvas completed to take home. No painting experience necessary. Consumable supply fee of \$20.00 per painting paid in cash to instructor.

C. Kozak.....Sheehan
1 night.....6:30 – 9:00 p.m.
Tranquil Valley, Monday.....October 1
Majestic Falls, Tuesday.....October 16
Cabin in the Meadow,
Thursday.....November 15
Each Night Resident.....\$85
Each Night Non-resident.....\$90

NEW! Start a Project

Pick out a project that you have always wanted to try. Choose from a sweater, shawl, hat, gloves, scarf or socks and more. We will get you started and see you through to completion. All supplies to be purchased at Country Yarns.

L. Scarpa.....Country Yarns
Thursday.....6:30 – 8:30 p.m.
4 weeks.....October 25
Resident \$90.....Non-resident \$95

NEW! Pastel Painting

Experiment with pastels in a painterly style. Subjects such as flowers, landscapes, seascapes and pets will be demonstrated to inspire you or for you to copy. Different techniques will be explored and you should be able to complete 3-4 pieces of art to be proud of. A consumable supply list will be included in the class confirmation.

S. Murphy.....Sheehan
Monday.....6:30 – 8:30 p.m.
8 weeks.....October 15
Resident \$128.....Non-resident \$133

NEW! Sew Cute

Very minimum sewing skills require. Create a unique 6" Gypsy Doll. There is room for creativity when you choose the fabric to fashion their colorful dresses. No doll creation will look the same. Bring a sewing needle, black and tan thread and scissors. Instructor will provide additional supplies and handouts.

D. Powers.....Sheehan
Wednesday.....7:00 – 9:00 p.m.
1 night.....November 7
Resident \$50.....Non-resident \$55

FITNESS / YOGA

Yoga for Beginners

For students new to yoga. Learn the foundations, the basic poses "asanas" and proper body alignment. Also breathing techniques to breathe deeper into a pose. Balance and stretch your muscles to go into the foundation poses.

K. Kelly.....Sheehan
Thursday.....5:45 – 6:45 p.m.
6 weeks.....October 4
Resident \$59.....Non-resident \$64

Yoga for Intermediate

For students comfortable with the beginner poses and are starting to feel like it is time to deepen their practice with intermediate poses. Sun salutations and concepts will be introduced and a segment on meditation techniques.

K. Kelly.....Sheehan
Thursday.....7:00 – 8:00 p.m.
6 weeks.....October 4
Resident \$59.....Non-resident \$64

Yoga for Everyone

This class is for those new to yoga and those that have had some prior experience. The class will build each week on poses introduced and go at the pace comfortable for the participants in the class.

S. Powers.....Sheehan
Wednesday.....6:00 – 7:30 p.m.
10 weeks.....September 26
Resident \$103.....Non-resident \$108

FITNESS / YOGA

Yoga Specialties

Each class will be offered for one night and will focus on a different area of the body. Take one class or all six.

Yoga for Beginners, October 15

Start your yoga journey with terms and poses that explain the principles behind the practice of yoga.

Yoga for Beginners II, October 22

Build on poses introduced in the first beginner class and add some new ones. We will go at a slower pace in the poses to improve your techniques.

Yoga for the Back, October 29

The focus will be yoga poses (asanas), warm ups, breathing and relaxation techniques to strengthen the muscles in your back.

Yoga for Athletes, November 5

Whether you are a runner, walker, swimmer or golfer, competitive athlete or a weekend warrior, yoga can benefit your body and mind with focus on flexibility and strength.

Yoga for Hips, November 19

Learn some yoga poses that can assist in stretching and bringing comfort to your hips.

Yoga Nidra, November 26

An ancient form of guided meditation that will take you to the deepest level of relaxation. Participants are encouraged to bring a blanket and a pillow to assist in the promotion of full relaxation.

S. Powers Sheehan
 Monday 6:00 – 7:30 p.m.
 6 weeks October 15
 Each Class Resident \$29
 Each Class Non-resident \$34
 Six Classes Resident \$79
 Six Classes Non-resident \$84



IN THE KITCHEN

NEW! Entrée's Made with Pressure Cooker

Demonstrating dishes made in minutes with a pressure cooker. Steak Pizzalola with noodles; Italian meat sauce; Pulled Pork in BBQ sauce; blow your mind fish sauce. Come hungry and bring containers to take home extra food! Consumable fee of \$35 for all ingredients paid in cash to instructor.

R. Inzero Sheehan
 Wednesday 6:30 – 9:00 p.m.
 4 weeks September 26
 Resident \$83 Non-resident \$88

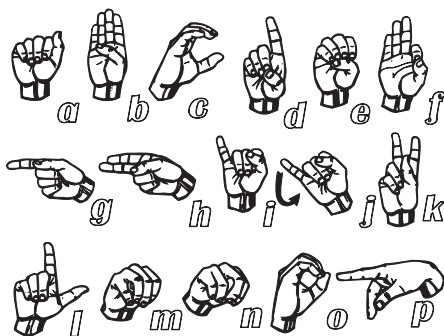


LANGUAGE

American Sign Language I

This course is designed for students who have no background in American Sign Language and wish to learn greetings, common phrases, the finger alphabet, basic grammar and vocabulary. Students will increase their knowledge and awareness of deafness and Deaf culture and feel confident in the basics of the language. No book is required.

K. Sanzo Sheehan
 Thursday 6:30 – 8:30 p.m.
 10 weeks October 4
 Resident \$154 Non-resident \$159



MEDICAL CAREER PROGRAMS

Registration/Pretesting: Students interested in becoming a Certified Nurse Assistant, Medical Assistant, Phlebotomist or Triple Medical Specialist are required to pretest prior to admission.

- Registration Test Dates: held at 5:30 p.m. at the Learning Center on July 20, July 30, August 7, August 16, August 22 and September 7.
- A non-refundable \$35.00 test and application fee required with reservation request.
- Please contact the Learning Center at 203-294-3900 immediately if you are interested in any of these courses. Class size is limited.
- C. Berube, Coordinator, email cberube@wallingfordschools.org

Certified Nurse Assistant (CNA)

A CNA provides care for individuals with health care needs under the direction of a licensed practical nurse (LPN) or registered nurse (R.N.). It is an entry-level paraprofessional position in the health care industry. Upon successful completion of this program, the student will be able to sit for the Connecticut Department of Health Nurse Aide Competency Examination. The fee for the state certification exam is included in tuition cost. Tuition does not include physical exam, uniform and required textbook. Classroom instruction is held Tuesday and Thursday evenings from 5:00 – 9:00 p.m. for 16 weeks at Mark T. Sheehan High School. Scheduled clinical sessions from 5:00 – 9:00 p.m. at a state licensed long-term care facility. A pretest and interview are required for approval into this program. Instructors: D. Kirychuk, RNBC
Required Textbook approximately\$60
Resident fee\$900
Non-resident fee.....\$925
Class begins Tuesday, September 11

Phlebotomy Program

Phlebotomists obtain blood from patients for laboratory analysis. Students will learn to identify: potential venipuncture sites, the cellular components of blood and their functions, the mechanisms for anitcoagulants, and necessary precautions for sample transport and infection control. A pretest, interview and high school diploma are required for approval into this program. Information about applying for national certification with the National Competency Certification Test (NCCT) will be distributed upon completion of course. Certification is the financial responsibility

of the student. Clinical and classroom instruction are required and are held for 16 weeks. Monday and Wednesday evening from 5:30 – 8:30 p.m. at Mark T. Sheehan High School.
Instructor: M. Benitez, CPT
Required Textbook and Lab fee.....\$120
Resident fee\$900
Non-resident fee.....\$925
Class begins Monday, September 24

Triple Medical Coding Program

Medical Terminology for the Serious Student: This course will unlock the mysteries of the medical language for all students who wish to communicate effectively in a medical career. This more detailed vocabulary is needed for coding.
Medical Billing and Coding: This course is designed for individuals interested in the growing field of medical billing. The student will learn how to translate ICD 10 CM and CPT coding and apply this knowledge to complete medical forms (CMS-1500).
Computerized Medical Office: This course uses SimChart to teach Electronic Health Record theory and application. After completing this course, students will be able to transfer their knowledge to similar office computer programs. Classroom instruction is held Monday and Wednesday evenings from 5:30 – 8:30 p.m. at Mark T. Sheehan High School. A pretest, interview and high school diploma are required for approval into this program. Instructor: E. Flynn, LMSW, MS
Required Textbooks approximately\$300
Resident fee\$900
Non-resident fee.....\$925
Class begins Monday, October 1 thru April 30, 2019

MEDICAL CAREER PROGRAMS

Medical Assistant Training Program

The Medical Assistant Program prepares the individual for the responsibilities of the medical assistant in a medical office, clinic or hospital environment. The administrative program training includes: scheduling, billing, ICD-10 coding procedures, insurance form preparation and electronic medical office computer skills. The clinical instruction includes: vital sign status, patient screening, basic lab and out-patient surgical procedures, phlebotomy skills, CPR/First Aid certification in adult/child/infant and pain management. Classroom instruction includes: Anatomy and Physiology of the human body, disease management, medical terminology and pharmacology. Career Development Life Skills include: resume assistance, interview processing. At completion of classroom instruction, the student is required to complete 160 hours of a clinical externship at an approved medical facility. For entrance into this program, the requirements are: a pretest, knowledge of basic computer skills and Microsoft windows, an interview and high school diploma. A criminal records background check is mandatory. Upon completion of both the classroom and externship components the student will be awarded a certificate of completion and is eligible to sit for the National Competency Certification Test (NCCT). Information regarding application and additional fee for the NCCT will be distributed upon completion of the course and certification is the responsibility of the student. [This course runs from September through June at Gaylord Hospital and Mark T. Sheehan High School. Class meets two nights a week, Monday and Wednesday evenings from 5:30 – 9:30 p.m. and every other Thursday 5:30 – 8:30 p.m.](#)
 Instructor: D. Kirychuk, RNBC
 Required textbooks approximately.....\$300
 Resident fee\$2900
 Non-resident fee.....\$2950
 Class begins Monday, September 10

MONEY MATTERS

Asset Protection, Title 19 and Long Term Care

If you or a loved one needs long-term care, you don't have to lose your house and all of your assets to the nursing home or to the State. Learn the current Medicaid rules and asset protection strategies so you can preserve your assets.

A. OrlandoSheehan
 Monday..... 6:00 – 8:00 p.m.
 1 night.....October 22
 Resident \$27 Non-resident \$32

Business Startup Boot Camp

Classes will guide an individual with planning and decision making details that go into starting and running a small business. Focus will be on entity selection, taxes, record-keeping, software, including creating a web presence and more. At the first class a textbook may be purchased at the approximate cost of \$30.

CPA Purtill & Co. InstructorSheehan
 Tuesday..... 6:30 – 8:30 p.m.
 4 weeksSeptember 18
 Resident \$40 Non-resident \$45

Financial Strategies for Successful Retirement

Learn important money management concepts and issues that are important to people near retirement. Topics include how to reduce pressure on your retirement income and which assets are appropriate for retirement income and how to make appropriate health care decisions. Explore options that allow you to transfer assets to other generations of your family. Workbook fee (optional) of \$30 is payable to instructor the first night of class. Spouse may attend for free.

S. JacquesSheehan
 Tuesday 6:30 – 8:30 p.m.
 3 weeksSeptember 25
 Resident \$39 Non-resident \$44

MONEY MATTERS

Guardian Angel Trusts: How to Leave Your Legacy

Open your eyes to an exciting Estate Planning tool most of us don't not know much about – Revocable Living Trusts. The law allows for careful drafted Trusts to protect money and other assets against Divorce, Lawsuits, Creditors, Bankruptcy and our loved ones silly spending habits! These documents act as a blank canvass – awaiting the chance to reflect its creators personalized wishes regarding gifts, timing and purpose of distributions. This creates a unique opportunity to act as the “Guardian Angel” for our family members.

B. Etter, Esq. Sheehan
Wednesday 6:00 – 7:30 p.m.
1 night.....October 17
Resident \$25 Non-resident \$30

Income Planning for Retirement

People retiring soon or looking to prepare for retirement will learn about different avenues of cash flow to support you in retirement.

M. Alimo Sheehan
Thursday 6:30 – 8:00 p.m.
1 night.....October 4
Resident \$25 Non-resident \$30

Organize and Secure Life's Important Documents

What would happen if your home was destroyed or you became ill or incapacitated? Would you or your family know how to access your critical financial, insurance, and personal documents? Learn strategies and techniques to file your documents in a simple, easy-to-use system to give key people in your life access to the documents they will need.

M. Argiro Sheehan
Tuesday 6:30 – 8:00 p.m.
1 night.....October 2
Resident \$25 Non-resident \$30

Planning for Affordable Long Term Care

This course covers the entire spectrum of long term care planning. How to protect your assets and income from an LTC illness; How the State of Connecticut views your assets and your income; How the use of trusts and gifting assets applies; How the CT Partnership works; LTC policies and how to avoid costly mistakes.

A. Abrahamian Sheehan
Wednesday 7:00 – 9:00 p.m.
1 night.....October 3
Resident \$27 Non-resident \$32

NEW! Dave Ramsey's – Financial Peace University

Financial Peace University (FPU) teaches God's ways of handling money. Through video teaching, class discussions and interactive small group activities, FPU presents biblical, practical steps to get from where you are to where you've dreamed you could be. This plan will show you how to get rid of debt, manage your money, spend and save wisely, and much more. Everything needed is included in a Material's fee of \$110.

To register and pay for materials, visit:

<https://fpu.com/10687772>

A. Czarnecki Sheehan
Thursday 6:00 – 8:00 p.m.
9 weeks October 4
Resident \$21 Non-resident \$26



PERSONAL ENRICHMENT

NEW! Are You Sick and Tired of Being Sick and Tired

Learn where most fatigue, stress and anxiety come from; what natural methods can help cure your fatigue and stress; and one thing you must do to help improve your mood.

Dr. D. DeRosa Sheehan
Thursday 6:30 – 7:45 p.m.
1 night November 1
Resident \$21 Non-resident \$26

Gut Reaction – Natural Solutions for Normalizing Digestive Function

Do you have sensitivity issues with your digestive system? Do you live on over the counter or prescription medication to control you digestive symptoms? Discover what your pain and discomfort is really telling you. The solution lies in a few simple steps to restore your digestive function back to normal.

Dr. D. DeRosa Sheehan
Thursday 6:30 – 7:45 p.m.
1 night October 11
Resident \$21 Non-resident \$26

Introduction to Meditation

Modern neuroscience shows that what we do and think can change the physical structure of the brain – yet often this change occurs unconsciously, when we habitually react to stress in unhealthy ways. Lisa Wimberger created Neurosculpting® as a complete approach for consciously reshaping our brains for greater happiness, health, creativity, and compassion. Dr. Kelley is a certified Neurosculpting® teacher. She will use the work of Lisa Wimberger and her own training to provide you with a unique experience of meditation, mindfulness, diet, and daily practices to help you create positive, lasting changes in your brain and your life.

K. Kelley Sheehan
Monday 7:00 – 8:00 p.m.
6 weeks October 15
Resident \$70 Non-resident \$75

Mindful Parenting

Learn how to parent/guide our children from a place of self-awareness, compassion and connection through basic concepts of Mindfulness and Conscious Parenting. Reading suggestion: The Awakened Family by Dr. Shefali Tsabary.

R. Carrano Sheehan
Tuesday 7:00 – 8:30 p.m.
4 weeks October 9
Resident \$55 Non-resident \$60

NEW! Release Excess Weight

Change how and why you eat by transforming yourself on the inside. With hypnosis and by nourishing yourself with self-compassion and kindness, you can regain control. Small changes and small goals create long-term success. Learn how to eat mindfully. CDs will be available for \$10. The instructor is a certified hypnotist with the National Guild of Hypnotist.

L. Lyons, M.S. Sheehan
Thursday 6:30 – 8:00 p.m.
6 weeks October 11
Resident \$85 Non-resident \$90

Wake Up Your Thyroid – Naturally Improve Thyroid, Energy and Metabolism

Problems with your thyroid can affect your weight, sleep, or energy levels. Undiagnosed thyroid problems put you at risk for certain serious conditions including cardiovascular diseases, osteoporosis, depression, and even infertility. Learn the two missing nutritional links and steps you can take to promote balance in your thyroid.

Dr. D. DeRosa Sheehan
Wednesday 6:30 – 7:45 p.m.
1 night September 26
Resident \$21 Non-resident \$26



SPECIALTY CLASSES

NEW! Introductory Body Language and Gestures

This course outlines the process and gives you specific tools for reading people in business, social or personal contexts. Also, learn how to send the right messages to others.

T. Knowlton Sheehan
 Wednesday 7:00 – 8:30 p.m.
 1 night September 26
 Resident \$25 Non-resident \$30

Chords Are Key for Piano

In just a few hours, you can learn enough secrets of the trade to give you years of musical enjoyment. While piano teachers teach note reading, piano professionals use chords. You can learn all the chords you will need to play any song in this one session. If you can find middle C and know the meaning of Every Good Boy Does Fine, you already know enough to enroll in this workshop. Includes an online book and online instructional videos.

D. Fontana Sheehan
 Monday 6:30 – 9:30 p.m.
 1 night November 19
 Resident \$59 Non-resident Fee \$64

Introduction to Digital Photography

Beginner or intermediate photographers with any camera and any photo editing experience can learn to make fine photographs regardless of the type of equipment you own. Learn to use your camera, take better photographs and learn the pure enjoyment of capturing the perfect image.

R. Godbey Sheehan
 Wednesday 6:00 – 8:00 p.m.
 6 weeks October 10
 Resident \$95 Non-resident \$100

Introduction to Essential Oils

This class will trace the history of essential oils (briefly) and discuss what they are. Their safe and effective use, the cost factor, the difference between brands, how to get the most value for your money. You will have your own roller bottle with the essential oil of your choice to take home. Materials fee of \$10.00 (cash) paid to instructor.

D. Kordorsky,
 Registered Dietitian Sheehan
 Tuesday October 16
 1 night 6:00 – 8:00 p.m.
 Resident \$25 Non-resident \$30

Healthy Over-the-Counter Remedies Made With Essential Oils

Swap your over-the-counter headache, cough/cold and joint/muscle pain for relief products for ones that contain no dyes, fillers or ingredients you can't pronounce! You will make a healthier version of all three, using only natural ingredients and the highest quality essential oils. Material fee of \$24.00 (cash) paid to instructor for all three products and their recipes.

D. Kordorsky,
 Registered Dietitian Sheehan
 Tuesday November 27
 1 night 6:00 – 8:00 p.m.
 Resident \$25 Non-resident \$30

Make Your Own Spa Quality Health and Beauty Products Using Essential Oils

Pamper yourself with a body sugar scrub, salt soak, body butter and lotion bar. Make a set for yourself and one for a gift! Materials fee of \$32.00 (cash) paid to instructor, makes four products. Additional sets for \$25.

D. Kordorsky,
 Registered Dietitian Sheehan
 Thursday October 11
 1 night 6:00 – 8:30 p.m.
 Resident \$25 Non-resident \$30



SPECIALTY CLASSES

NEW! Fortune Telling

Who doesn't want to know what tomorrow will bring? The ability to foretell the future is a great social asset as well as a fascinating pastime. Learn the methods of divination from Tarot to Palmistry and from tea leaf reading. Also explore techniques to help you develop your innate psychic abilities. At the conclusion of this class students will be able to foretell the future using 13 Methods of Divination.



D. Powers..... Sheehan
 Tuesday..... 7:00 – 9:00 p.m.
 1 night..... October 30
 Resident \$25Non-resident \$30

Getting Paid To Talk

Ever been told you have a great voice? From audio books and cartoons to documentaries, commercials, this class will introduce you to the field of voice over. Learn what the pros look for, how to prepare, and where to find work in your area. You will have an opportunity to record a short professional script.

For more information visit:

www.voicecoaches.com/gppt

Voice Coaches..... Sheehan
 Thursday..... 6:30 – 9:00 p.m.
 1 night..... November 8
 Resident \$35Non-resident \$40

NEW! Ghosts and How to See Them

A complete course in the study of ghosts. You will learn step by step how to conduct a scientific investigation. Come explore the shadowy world of ghosts and hauntings presented by a Certified Ghost Hunter with the International Ghost Hunters Society and the Ghost Club of England.

D. Powers..... Sheehan
 Thursday..... 7:00 – 9:00 p.m.
 2 weeks October 4
 Resident \$39Non-resident \$44

NEW! Reiki Level 1

Any adult who wants to learn Reiki for self-care or treatment of others and also, learn the history and benefits of Reiki treatment. Reiki is done by a client lying fully clothed on a massage table or sitting in a chair while the practitioner moves through a series of light hand placements.

E. Anderson..... Sheehan
 Tuesday..... 6:00 – 8:30 p.m.
 4 weeks October 9
 Resident \$155Non-resident \$160

Replacement Window Workshop

Compare products and prices. See how windows are properly installed. Save on your heat and air conditioning bills and take advantage of incentive programs available. Learn from an experienced Master Carpenter about having windows replaced or replacing windows yourselves.

P. O'Doherty,
 Master Carpenter..... Sheehan
 Thursday..... 7:00 – 9:00 p.m.
 1 night..... October 4
 Resident \$40Non-resident \$45

SAT and PSAT Prep - Lentz & Lentz

Designed to benefit students of all ability levels. This program is divided equally between English and math and covers all facets of the SAT and PSAT. Tuition includes course materials, extra help, live make up classes, online downloads for review or missed lessons and spring refresher classes. Features test-taking skills, grammar skills, reading interpretation, speed-reading improvement techniques, advanced math review, shortcut math, tip sheets, vocabulary development, essay writing.

For more information or to register call 1-845-638-2826 or visit

www.LentzSATPrep.com.

Lentz & Lentz Instructor..... Sheehan
 8 weeks 6:00 – 9:00 p.m.
 Monday.....September 10
 Fee..... \$399

TEEN DRIVER EDUCATION

Wallingford Adult Education through Crossroads Driving School offers Teen Driver Education at both Mark T. Sheehan and Lyman Hall high schools after the school day. The program will offer three options to obtain a State of Connecticut Driver's License. **(Student must be age 16 to start the course.)**



Option 1 (Full Course) includes 30 hours of classroom (15 classes) which includes the safe driving, drug and alcohol program, plus 8 hours of behind-the-wheel. Most insurance companies offer a discount if you take this full course. Driving sessions will be scheduled by the instructor. Fee \$565.

Option 2 (Classroom – No Driving) includes 30 hours of classroom (15 classes) which includes the safe driving, drug and alcohol program. No behind-the-wheel. Fee \$290.

Option 3 (Safe Driving/Drug & Alcohol Program) this 8 hour course (4 classes) fulfills the mandatory requirement of the State of CT for license applicants who choose a Home Training Program. Required for all drivers, including those over 18. Fee \$150.

Required by State Law!

A parent and student orientation and information class!

For student to receive a certificate, the student as well as at least one parent, it is mandatory to attend this 2 hour orientation session (considered to be first class). If the student is 18 years old or older a parent does not need to attend but the student must attend. This orientation is included in the 30 hours of classroom time.

Lyman Hall High School – Fall 2018

Parent and student orientation session (this is considered first class) will be held on Monday, September 17 from 6:00 – 8:00 p.m.

Classes will be held Monday, Tuesday and Wednesday, 2:15 p.m. to 4:15 p.m.
Starting – Tuesday, September 18

Lyman Hall High School – Winter 2018-19

Parent and student orientation session (this is considered first class) will be held on Monday, November 26 from 6:00 – 8:00 p.m.

Classes will be held Monday, Tuesday and Wednesday, 2:15 p.m. to 4:15 p.m.
Starting – Tuesday, November 27

Mark T. Sheehan High School – Fall 2018

Parent and student orientation session (this is considered first class) will be held on Monday, October 1 from 6:00 – 8:00 p.m.

Classes will be held Monday, Tuesday and Thursday, 2:15 p.m. to 4:15 p.m.
Starting - Tuesday, October 2

Mark T. Sheehan High School – Winter 2018-19

Parent and student orientation session (this is considered first class) will be held on Monday, December 10 from 6:00 – 8:00 p.m.

Classes will be held Monday, Tuesday and Thursday, 2:15 p.m. to 4:15 p.m.
Starting - Tuesday, December 11

Diane Stanley, Instructor

For more information about Crossroads Driving School visit www.crdrivingschool.com

TRAVEL

Explore the following DAY Trip with Friendship Tours/The Ship Shop

Libraries of Manhattan / New York

New York Public Library • Morgan Library & Museum

Saturday, November 10

Begin your day in NYC for lunch (on own) at the Grand Central Terminal food court – remember to look up at the beautiful ceiling! Afternoon at the New York Public Library for a guided tour of the history & architecture of this landmark building flanked by the 2 lions – Patience & Fortitude. There are many beautiful spaces within but perhaps the most spectacular is the Rose Main Reading Room. After a year-long renovation that spiffed up the enormous research room-which is about as long as two city blocks-its plater rosettes, celestial mural, and ornate chandeliers are more glorious than ever. Next will be a self-guided visit of The Morgan Library which began as the private library of financier Pierpont Morgan, one of the preeminent collectors and cultural benefactors in the US. The complex consists of J.P. Morgan's exquisite library, refurbished in 2010, along with the splendid, marble-covered rotunda, a red-paneled study, and other glorious rooms. This trip includes a Friendship Tours Tour Director for the day to assist in maneuvering your way through NYC! This trip requires a moderate level of walking. The libraries and Grand Central are large buildings. Reserve your seat through Wallingford Adult Educations' Registration Form.

Meet the deluxe Motor Coach in the parking lot behind the historic Wallingford train station for a 8:00 am departure and return 7:00 pm.

Cost: \$97. Lunch on own.

Explore the following CRUISE with Friendship Tours/The Ship Shop

Quebec Winter Carnival Cruise / Canada

**NY • Sydney, Nova Scotia • Cornerbrook, Newfoundland
• Prince Edward Island • Quebec • NY**

October 8 – 18, 2019 / 11 Days – 10 Nights

- Roundtrip deluxe Motorcoach transportation to the NY Pier
- Professional Ship Shop Escort throughout cruise
- 10 nights onboard the brand new MSC Meraviglia
- All meals onboard
- Spectacular entertainment; Casino; Full Service Spa and Fitness Center
- Special Ship Shop Parties & Events

Valid U.S. Passport Required for Travel! Cost from \$1149.pp Twin Inside. Deposit of \$450.pp due with reservation. Final Payment Due June 26, 2019. Trip Protection Coverage is strongly recommended. Partial Payment Cancellation Policy. Cancel Penalty refunds vary beginning June 26, 2019. No Refunds if canceled after August 15, 2019.

**For more information and for reservation contact Adult Education or
The Ship Shop 860-243-1630 or 800-243-1630.**

TRAVEL

Explore the following 2019 Trips through Collette and Gallagher Travel

Imperial Cities Featuring Prague, Vienna & Budapest

April 29 – May 9, 2019

**11 Days • 15 Meals: 9 Breakfasts,
1 Lunch, 5 Dinners**

HIGHLIGHTS ... Prague, Prague Castle, Lobkowitz Palace, Choice on Tour, Cesky Krumlov, Vienna, Grinzing Evening, Classical Music Performances at Lobkowitz Palace and Schoenbrunn Palace Orangerie, Danube River Cruise, Bratislava, Budapest, Matthias Church, Fisherman's Bastion, School Visit, Visegrad, Renaissance Dinner.



Per Person rates: Double \$3,749. Single \$4,499. Triple \$3,719. A Deposit amount of \$500. pp due upon reservation. Final payment due October 29, 2018. Not included in Price: Cancellation Waiver and Insurance of \$315.pp.

Painted Canyons of the West Featuring Utah's 5 National Parks

September 22-30, 2019

**9 Days • 11 Meals:
7 Breakfasts, 1 Lunch,
3 Dinners**

FEATURING ... Colorado National Monument, Arches National Park, Canyonlands National Park, Moab, Dead Horse Point State Park, Utah's Scenic Byways 12 & 24, Capitol Reef National Park, Grand Staircase-Escalante National Monument, Bryce Canyon National Park, Zion National Park, Las Vegas.



Per Person rates: Double \$3,699. Single \$4,799. Triple \$3,649. A Deposit amount of \$500.pp due upon reservation. Final payment due July 24, 2019. Not included in Price: Cancellation Waiver and Insurance of \$315.pp.

**TO LEARN MORE ABOUT EITHER TRIP JOIN US
FOR AN INFORMATION SESSION ON:**

**Monday September 24, 2018 at Mark T. Sheehan High School. Time: 6:30 p.m.
Please RSVP 203-265-2856.**

ASK FOR BROCHURE!

For more information and Reservations contact: Judi Gallagher 203-265-2856
or email: judigallagher@yahoo.com

ENRICHMENT AND GENERAL INTEREST CLASSES

GENERAL INFORMATION

1. In person



Register weekdays from 8:30 am to 3:00 pm at the Adult Education office located at

Sheehan High School (203) 294-5932 or the Learning Center located at the historic Wallingford Railroad Station (203) 294-3900.

2. By mail



Please use a separate registration for each student, even if you are registering together with your spouse or friends.

- You may register for up to four courses per

registration form. If you are signing up for more than four courses, attach a second form.

- Photocopying the registration form is okay.
- Payment can be made by check or money order. A separate check or money order for each class is required. Make check payable to Wallingford Adult Education.

PLEASE NOTE

Course Confirmation

A course confirmation sheet will be mailed to you. This sheet lists the room numbers of your classes and any materials you should bring with you to class.

Cut-off Dates for Course Registrations are...

One week prior to the date the class begins. OR two weeks prior to the start date if the course requires you to purchase a textbook.

Consumable Supply Fees

Please DO NOT include the consumable supply fee with your registration payment. Fees are collected on the first night of class, and must be paid in cash.

Who Can Register?

Anyone age 17 or over. All registrations are processed in the order in which they are received. Exceptions to the age requirement are found in some courses. Registrations from Wallingford residents are processed before registration for non-residents opens.

Registering for Courses with Different Start Dates

If you want to register for more than one course, you may send all registrations and payments in together. However, we must receive the registrations one week prior to the date of the first class.

LITERACY VOLUNTEERS

If you can read, you can help!

Literacy Volunteers needs volunteer tutors in all the communities it serves to help adults learn to read and speak English. Just two hours of your time a week can make a big difference in someone's life!

Free training for new volunteer tutors is held three times a year. Go to www.lvagnh.org to fill out/send in a tutor application or call 203-776-5899 for more information.

AMERICAN JOB CENTER OF CONNECTICUT

Need help getting a job, developing a resume, or exploring career options? Connecticut American Job Center provides free training programs and paid internships for 16-24 year-olds with a high school diploma or high school equivalency certificate. Visit your one stop center in Meriden, 87 West Main Street (203-238-3688) OR Hamden, 37 Marne Street (203-859-3200)

GENERAL INFORMATION

Refund Policy

Course fees will not be prorated and no refunds are given unless a course is canceled. A course may be canceled for insufficient enrollment, postponed or a change in instructors. If insufficient enrollment causes a class to be canceled, full tuition is refunded or a credit is given for future use. Materials and supplies purchased by you are excluded from refunds and credits. Please allow four to five weeks for the refund process. A \$10.00 processing fee will be deducted from all refunds. A request for refund must be made one week before the course begins.

Low Enrollment/Course Cancellations

A course with insufficient enrollment will be canceled one week before the starting date. Registered students will be notified by telephone if a course must be canceled. When enrollment is low and to avoid cancellations, the number of class sessions and/or course pricing may be adjusted.

Bad Weather/Class Cancellations

If Wallingford Public Schools close due to weather or school schedules, Adult Education classes are also closed. Cancellation announcements for evening classes will be made at approximately 4:00 p.m. on the following radio and television stations:

- WTNH-TV - Channel 8
- WTIC-TV - Channel 61
- WFSB-TV - Channel 3
- WVIT-TV - Channel 30
- WPLR 99.1 FM
- WDRC 1360 / AM 103 FM
- WTIC 1080 AM / 96.5 FM
- WRCH 100.5 FM
- Or call 203-294-5932

Make-Up Dates

Canceled classes will be made up at the end of the scheduled run of the class. Check with your instructor about make-up dates.

Smoking/Refreshments

A non-smoking policy is in effect at all class sites indoors and out. Refreshments are permitted in designated areas, not in classrooms, hallways or lavatories.

Parking

At Sheehan High School, please use the rear parking lot. Illegally parked cars in designated emergency or handicapped zones may be ticketed by the Wallingford Police Department. All of our programs are handicapped accessible. Check with either of our offices for more specific information.

Locations

- Adult Education Learning Center, (Railroad Station), 37 Hall Avenue.
- Mark T. Sheehan High School, 142 Hope Hill Road.

SEARCHING FOR TALENT:

We are always seeking new ideas for new General Interest Courses. Need world language instructors and expertise in drawing, painting and crafts. Teaching certification is not necessary, just your skill and interest in a hobby or topic and a willingness to share your knowledge. Please contact:

Wallingford Adult Education
Barbara Kish
(203) 294-3900
bkish@wallingfordschools.org

LEARN2EARN
CONNECTICUT ADULT EDUCATION: The Pathway to Lifelong Learning
Like Us: www.Facebook.com/learn2earnCT

REGISTRATION

NAME

First _____ Last _____

Date ____/____/____

ADDRESS

Street _____

City _____ State _____ Zip _____

E-MAIL ADDRESS _____

Your email address allows WAE to send announcements.

PHONE

Home _____ Work _____ Cell _____

INDICATE YOUR METHOD OF PAYMENT

Exact Cash Check (# _____)

MAIL TO: Wallingford Adult Education

142 Hope Hill Road

Wallingford, CT 06492

PHONE: 203-294-5932

email: sgovin@wallingfordschools.org

CLASS DATE	COURSE TITLE	DAY	LOCATION	FEE

TOTAL DUE: _____

REMEMBER:
a separate check
for each class.

**FOR ALL OTHER CONSUMABLE FEES, PAY THE INSTRUCTOR
IN CASH ON THE FIRST NIGHT OF CLASS.**



Wallingford Adult Education Staff ...

Sashi Govin, *Director*
Matthew Madruga, *School Counselor*
Barbara Comstock, *Secretary*
Barbara Kish, *Secretary*

Wallingford Board of Education ...

Kathy Castelli
Erin Corso
Karen Hlavac
Roxane McKay, *Chairperson*
Patty Pursell
Patrick Reynolds, *Secretary*
Michael J. Votto, *Vice Chairperson*
Tammy Raccio
Ray Ross

Superintendent of Schools ...

Salvatore F. Menzo, Ed.D.

Adult Education Advisory Advisory Council ...

Pamela Andersen
Carol Berube
Paul Flinter
Rosalind Gallagher
John Gawlak
Sashi Govin
Carol Halstead
Maria Harlow
Eloise Hazelwood
Amy Humphries
Thomas Moffo
Myra Thistle

STATEMENT OF NON-DISCRIMINATION

The Wallingford Public School District is committed to a policy of equal opportunity/affirmative action for all qualified persons and does not discriminate in any employment practice, education program, or educational activity on the basis of race, color, religious creed, sex, age, national origin, ancestry, marital status, sexual orientation, gender identity or expression, disability (including but not limited to, intellectual disability, past or present history of mental disorder, physical disability or learning disability), genetic information, or any other basis prohibited by Connecticut state and/or federal nondiscrimination laws.

The Board of Education Coordinator for TITLE IX is Danielle Bellizzi, Assistant Superintendent Personnel. Contact information is 203-949-6508, mailing address is 100 S. Turnpike Rd., Wallingford, CT 06492.

The Board of Education Coordinator for TITLE VI and Section 504 is Ms. Laura Klimaszewski. Contact information is 203-294-5948, mailing address is 100 S. Turnpike Rd., Wallingford, CT 06492.

The Adult Education Safe School Climate specialist is Sashi Govin, contact is 203-294-3905, mailing address is 37 Hall Avenue, Wallingford, CT 06492.

The Program Disability's contact person is Matthew Madruga, 203-294-3904.

The Mission Statement of Wallingford Adult Education

Education is a continuing, life-long, learning process. It is the policy of the Wallingford Board of Education to provide a strong adult education program that will:

- enable learners to acquire the basic skills necessary to function in society;
- enable learners to continue their education through the level of secondary school completion;
- make available the means to secure training that will enable learners to become more employable, productive and responsible citizens.

Wallingford Adult Education will provide the necessary instructional and counseling services to learners so that they may successfully attain their goals.

Wallingford

Adult & Continuing Education

www.wallingfordadulted.org

www.facebook.com/wallingfordadulteducation



Wallingford Public Schools
142 Hope Hill Road
Wallingford, CT 06492

Non Profit
US Postage PAID
Permit No. 63
Wallingford, CT 06492